

# Web Sensors Premium | Flexible

## Next-generation network sensors with direct access to data

Measurement without the need to build additional infrastructure. Immediate access to data via an intuitive web interface. Designed for modern IT environments, secure communication, and easy system integration.



- Measured variables:
  - temperature in the range -200 °C to +260 °C
  - relative humidity
  - CO<sub>2</sub> concentration
  - atmospheric pressure
  - dew point
  - binary inputs
- Key advantages:
  - secure communication (HTTPS, modern protocols – cybersecurity)
  - direct connection to Ethernet network (LAN)
  - integration with web server – no software required
  - immediate access to current and historical data
  - email alerts and audible alarms with remote monitoring
  - data backup in case of communication failure
  - power supply via PoE (Power over Ethernet) or 5–24 V
  - remote device configuration



product catalog



More information on the website

# Premium Series for Demanding Applications

Compact and highly accurate sensors for specialized applications

Web Sensor 2.0 in the Premium TA series is an ideal solution for environments where advanced functions, higher measurement accuracy, and complex alarm logic are required. This series is designed for air quality monitoring, HVAC systems, data centers, and industrial applications that require multiple channels, combined measurements, and an integrated display.

## Premium Series Characteristics

- **full-featured compact sensors**
- precise sensors for temperature, humidity, pressure, CO<sub>2</sub>
- advanced calculations (dew point, difference, trend graphs)
- ideal for environments with higher demands on accuracy and functionality (HVAC, industrial, laboratories)

## Key Features

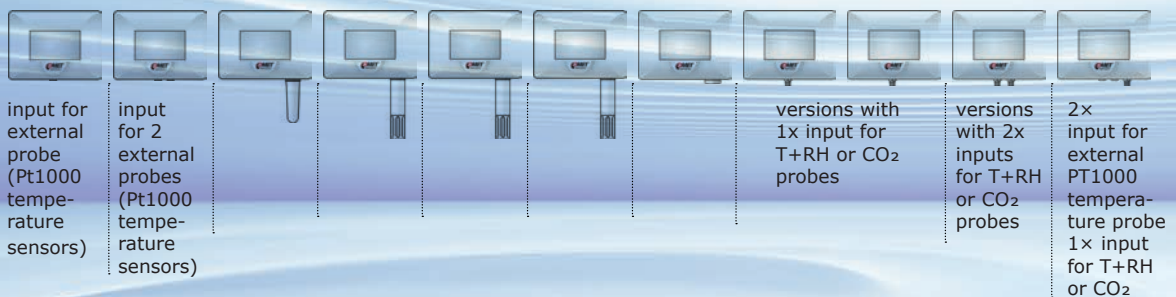
- display + LED + acoustic signal for clear indication
- multi-channel and combined measurements
- advanced alarm logic

- **Internal sensor**
- **External probe**
- Ⓜ **Combination**



Measurement Ranges & Accuracy

SENSOR MODEL	TA4611	TA4621	TA0610	TA3610	TA7610	TA7640	TA5640	TA3611	TA7611	TA3621	TA3645
temperature	○	○	●	●	●	●	-	○	○	○	○
humidity	-	-	-	●	●	●	-	○	○	○	○
CO <sub>2</sub>	-	-	-	-	-	●	●	○	○	○	○
atm. pressure	-	-	-	-	●	●	●	-	●	-	-



Quantity	Internal / External	Range	Accuracy
temperature	●	-30 to +60 °C	±0,4 °C
	○	-200 to +260 °C*	±0,2 °C **
relative humidity	Ⓜ	0 to 100 % RH	±2,5 %
CO <sub>2</sub>	●	0 to 5 000 ppm	±(50 ppm + 3 %)
	○	0 to 10 000 ppm	±(50 ppm + 3 %)
atm. pressure	●	600 to 1100 hPa	±(100 ppm + 5 %)

\*With connected probes

\*\*Above +100 °C: typically ±0.2% of the measured value

# Flexible and Efficient Solution

## Cost-effective sensors for common monitoring applications

The PA series offers essential features with flexible inputs and is a cost-effective choice for users requiring high flexibility with external sensors. Although it does not include an internal display, it still provides advanced connectivity options, making it ideal for larger systems where an on-device display or complex controls are not required.

### Flexible Series Characteristics

- cost-effective and flexible solution
- external probes for temperature and humidity measurement
- without display, but supports easy installation and configuration
- suitable for large-scale systems and simple applications

### Advantages of Premium vs. Flexible

- wider measurement range and combination of variables
- internal display, acoustic and visual alarms
- advanced calculations (dew point, humidex, differences)
- multi-channel calculations



SENSOR MODEL	PA8610	PA8611	PA8641	PA8652
temperature	●	○	○	○
humidity	-	○	○	○
binary inputs	-	-	-	○



1× input for external T+RH probe



4× inputs for external T+RH probes



2× inputs for external probes + 3x binary inputs

Quantity	Internal / External	Range	Accuracy
temperature	●	-30 to +60 °C	±0,6 °C
	○	-50 to +100 °C*	depending on the probe
relative humidity	○	10 to 90 % RH	±3,5 %

\*Depending on the probe

**Premium and Flexible series use different types of probes and are not interchangeable.** More information about probe types and accessories can be found on the website.

# Software solution for data processing: Web Server, COMET Cloud and COMET Database



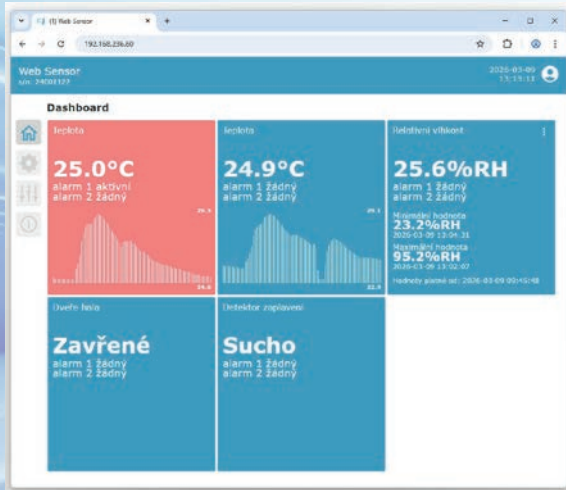
Display real-time or stored data in COMET Cloud, where users can switch between graphical and tabular views, combine data into a single chart or separate it by measurement channels, group devices, and more.



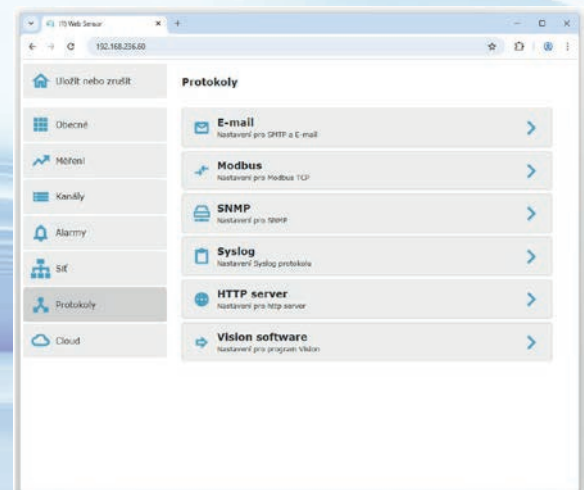
**Current measured values** are available online – or remotely in a web browser from anywhere, simply enter the IP address. Alarm states are highlighted in red.

## Communication interface

Allows easy integration with third-party systems.



Web server interface



## Supported protocols:

### SNMP v1-v3:

- Support for secure device management (authentication, encryption)

### Modbus TCP:

- Communication with industrial systems, PLC and process integration

### HTTPs/JSON:

- Secure access to data and configuration via web interface

### Email alerts:

- Sending notifications based on set thresholds or system errors

... and additional protocols will be added in the

